

## Features & Specification



**Heavy duty support structure**  
With aluminium alloy body and table - top covered by high grade stainless steel.

## Automatic Label Counting Machine

High speed count with high precision system.

Counting the number of labels and measuring roll's length (detailed in millimeters) concurrently.

System controlled by PLC and high precision Label Sensor

Easy to setting up with intelligent algorithm  
Just set only one preset value.

Slow down smoothly and stop accurately with "Auto Deceleration function".

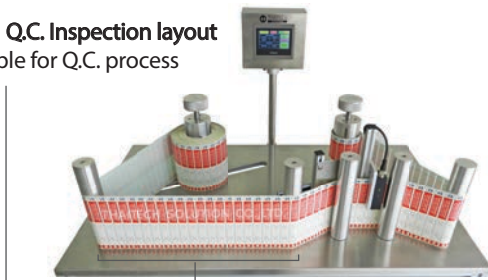
HMI touchscreen control panel with user-friendly design.

Heavy Duty Support for large and heavy label roll with High Grade Stainless Steel & Aluminium Alloy

Many options for various demand.....

- Missing Label Detection + Fixing Mode
- LED Stroboscope
- Direct instant inkjet printing to label system
- Barcode verification system
- Camera inspection system

**Wide Q.C. Inspection layout**  
Suitable for Q.C. process



**High performance Label Sensor**  
easy to setting up and detecting precisely



**Large screen control panel**  
very easy to operation  
just set only 1 target value

## Technical Parameters

<b>Controlling System</b>	Programmable Logic Controller
<b>Dimension</b>	1.02 m. x 0.62 m. x 0.81 m.
<b>Counting speed</b>	50 - 200 m. / min (adjustable)
<b>Applicable label Height</b>	20 - 200 mm.
<b>Control Panel</b>	HMI Touchscreen panel
<b>Max label roll diameter</b>	400 mm.
<b>Standard inner core size</b>	3 inches.
<b>Power Supply</b>	220 V AC
<b>Stroboscope</b>	Optional
<b>Missing Label Detection</b>	Optional
<b>Driving Motor</b>	1/2 HP
<b>Label Sensor</b>	Opaque paper / Clear plastic
<b>Machine Material</b>	Aluminium Alloy frame and Stainless Steel table surface

